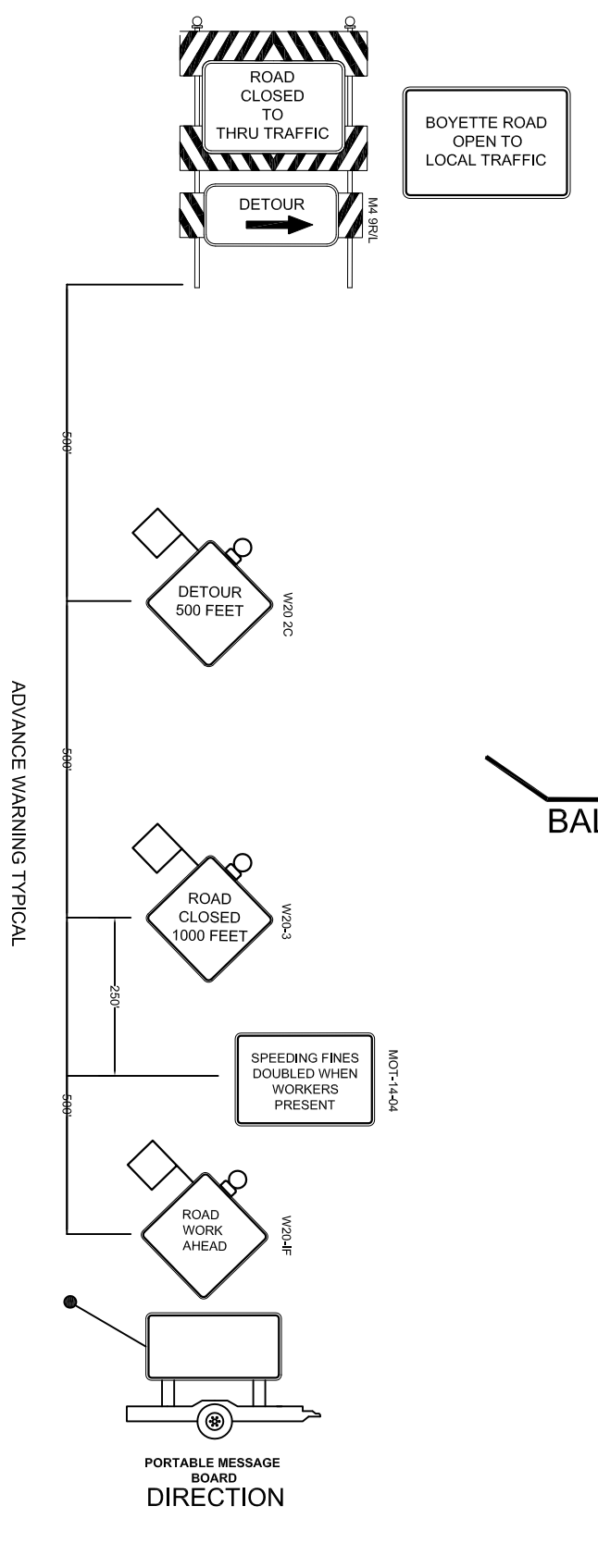


* WHERE FULL ADVANCED WARNING DISTANCES CANNOT BE MET, CONTRACTOR TO SPACE EVENLY IN ALLOWABLE SPACE
 * CONTRACTOR SHALL CONFORM TO ALL GENERAL STANDARDS OF INDEX 600 PROJECT.

- PORTABLE MESSAGE BOARD** BEFORE CONSTRUCTION
 - DISPLAY 1 BOYETTE ROAD CLOSED
 - DISPLAY 2 'DATE' THRU 'DATE'
- PORTABLE MESSAGE BOARD** DURING CONSTRUCTION
 - DISPLAY 1 BOYETTE ROAD CLOSED
 - DISPLAY 2 LOCAL TRAFFIC ONLY
 - DISPLAY 3 FOLLOW DETOUR
- PORTABLE MESSAGE BOARD** DURING CONSTRUCTION
 - DISPLAY 1 BOYETTE SOUTH OF FISHHAWK BLVD CLOSED USE MC MULLEN



NOTE:
 VARIABLE MESSAGE BOARDS SHALL BE PLACED AT EACH END OF THE PROJECT ONE WEEK PRIOR TO ROAD CLOSURE FOR ADVANCE NOTICE AND SHALL REMAIN IN PLACE FOR THE DURATION OF THE PROJECT.

DESIGNED	BY	DATE	DATE	DATE
DRAWN	BY	DATE	DATE	DATE
CHECKED	BY	DATE	DATE	DATE
RIPA AND ASSOCIATES, INC 1409 TECH BLVD, S-1 TAMPA, FL 33619		TAMPA CIVIL DESIGN 2828 ENRICH ROAD TAMPA, FL 33626 (813) 986-8855 PHAXE JEREMY COUCH, P.E. #7858		BOYETTE ROAD ROUND ABOUT
TRAFFIC CONTROL PLAN BOYETTE RD CLOSURE			DATE: 1/12/2011	SHEET: